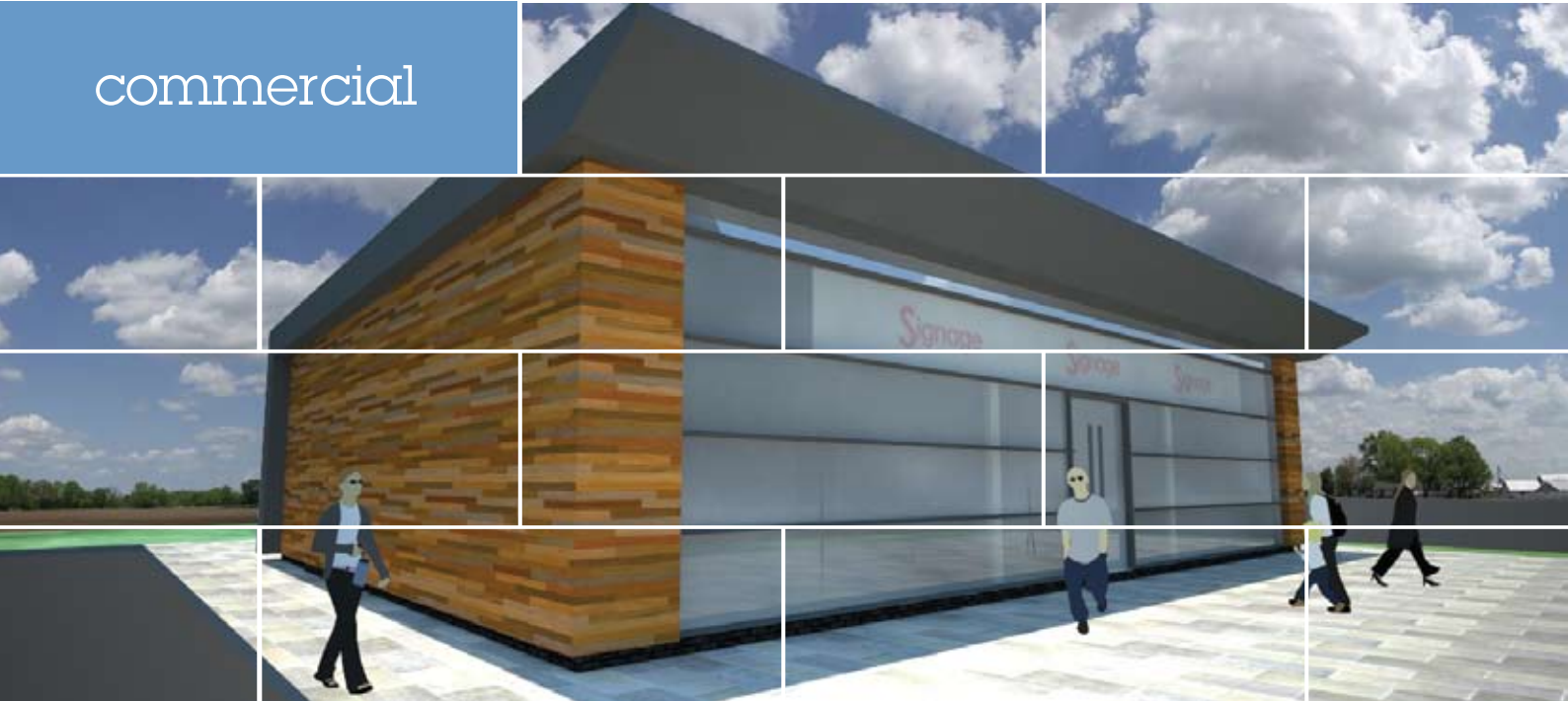


commercial



Passive Retail

The intelligent solution to rapid low carbon construction

Flexible Design

The external insulated concrete shell provides improved thermal performance and is BRE A+ accredited. The units can be finished to suit all planning requirements. The elevations are finished in either brick, stone, timber, steel or render, the roofs can be in either steel, aluminium, single ply or green sedum. External glazed panel shopfronts are BRFC rated to B and C minimum.

10 Week Programme

By utilising modular design and a co-ordinated partnering of the construction process clients will benefit from guaranteed programme savings over traditional construction to give rise to earlier income streams and reduced impact on the trading of existing sites.

U Values

Constructed to standards up to 40% improvement on Part L current Building Regulations.

Air tightness levels 50% in excess of current Building Regulations requirements.

Running Costs

Anticipated 40% reduction in energy costs in use.

Warranted

The construction is warranted for both design and construction by Carbon Logix with institutional recognised insurance cover.

Costs

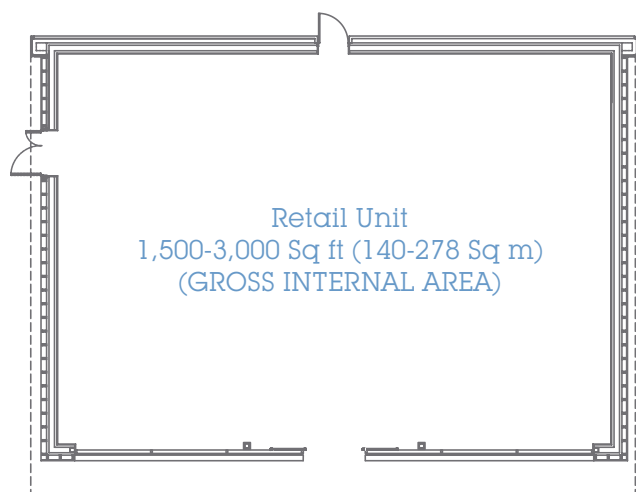
£100/ft² £1076/m² build costs for the shell unit on a typical site with cedar cladding and standing seam aluminium roof.



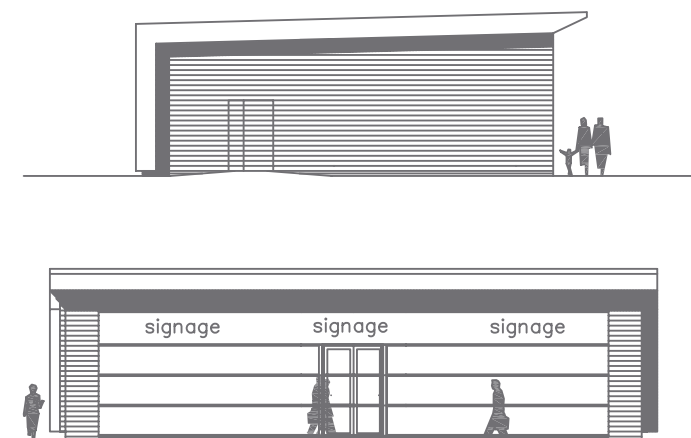
Passive Retail

	Carbon Logix Retail	Traditional Construction
Thermal Performance: Roof	0.19 Wm ² °C	0.25 Wm ² °C
Walls	0.14 Wm ² °C	0.35 Wm ² °C
Shop front	0.8 Wm ² °C	2.2 Wm ² °C
Floor	0.19 Wm ² °C	0.25 Wm ² °C
Air tightness	3	6-8
Programme	10 Weeks on site for the main building	15-20 weeks on site for main building
Costs	£100ft ² dependant upon external finishes and site conditions	£100ft ² dependant upon external finishes and site conditions

Typical Floor Plan



Indicative Elevation



Carbon Logix in Partnership with:

